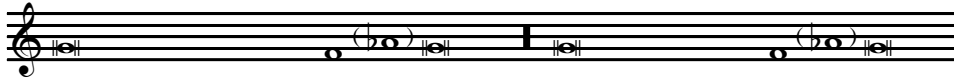


Schema



1



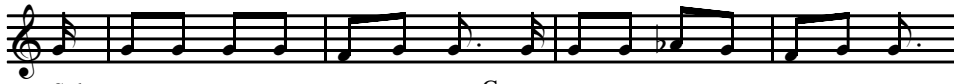
Solo



Group

etc.

2



Solo

Group



Solo

Group

3



Da Capo

4



Solo



Group



Group

Da Capo

II

Schema 1. 2.

1

Solo

Group

Solo etc.

2

Solo

Group

Solo

3

Solo

III

Schema

Solo

The image displays a musical score for a piece titled 'III'. It consists of seven staves of music. The first staff is labeled 'Schema' and contains a single melodic line with a long, sweeping slur over the entire phrase. The second staff is labeled 'Solo' and begins a more complex melodic line. The following four staves continue this solo line, featuring various rhythmic patterns, including eighth and sixteenth notes, and some slurs. The sixth staff includes a triplet of eighth notes, indicated by a bracket and the number '3'. The seventh staff concludes the solo section with a final melodic phrase and a double bar line.

IV

1

Musical notation for section 1, consisting of five staves. The first staff is a single note. The second and third staves are marked "Solo" and "Group" respectively. The fourth and fifth staves are marked "Solo" and "Group" respectively. The notation includes a treble clef, a key signature of two flats, and a common time signature. The music consists of eighth and quarter notes.

2

Musical notation for section 2, consisting of two staves. Both staves are marked "Solo". The notation includes a treble clef, a key signature of two flats, and a common time signature. The music consists of eighth and quarter notes.

3

Musical notation for section 3, consisting of four staves. The notation includes a treble clef, a key signature of two flats, and a common time signature. The music consists of eighth and quarter notes.

4

Musical notation for section 4, consisting of three staves. Each staff has a triplet marking over a group of three notes. The notation includes a treble clef, a key signature of two flats, and a common time signature. The music consists of eighth and quarter notes.

IV. a

Schema

Solo

Group

Solo

Group etc.

Detailed description: This section contains five staves of music. The first staff is a 'Schema' consisting of a single line with a long melodic line. The following four staves are arranged in pairs, each pair labeled 'Solo' and 'Group'. The 'Solo' parts feature more complex rhythmic patterns, while the 'Group' parts are simpler. The final staff ends with 'etc.'.

V.

1

2

1

2 etc.

Detailed description: This section begins with a 'Schema' staff. It then consists of two systems of music. Each system has two staves labeled '1' and '2'. The first system shows a complex rhythmic pattern in staff 1 and a simpler accompaniment in staff 2. The second system is similar but includes a triplet in staff 1. The section ends with 'etc.'.

VI

Schema



1

Solo

Group

Solo

Group etc.

2

3

Solo

Group

Solo

Group

4

Solo

Group

VII



A



B



Av



Bv



etc.

VIII



A

Musical staff A consists of two staves. The top staff (labeled '1') has a treble clef and a key signature of one sharp. It contains a complex melodic line with many sixteenth notes and some triplets. The bottom staff (labeled '2') has a bass clef and a key signature of one sharp, providing a harmonic accompaniment with eighth and sixteenth notes.

B

Musical staff B consists of two staves. The top staff (labeled '1') has a treble clef and a key signature of one sharp. It features a melodic line with a triplet of eighth notes. The bottom staff (labeled '2') has a bass clef and a key signature of one sharp, with a simpler accompaniment.

C

Musical staff C consists of two staves. The top staff (labeled '1') has a treble clef and a key signature of one sharp. The bottom staff (labeled '2') has a bass clef and a key signature of one sharp. Both staves contain intricate melodic and rhythmic patterns.

C 2
cont.

A single musical staff in treble clef with a key signature of one sharp, continuing the melody from the previous staff. It contains a series of eighth and sixteenth notes.

Bv

Musical staff Bv consists of two staves. The top staff (labeled '1') has a treble clef and a key signature of one sharp. The bottom staff (labeled '2') has a bass clef and a key signature of one sharp. The music features a mix of eighth and sixteenth notes.

Schema

The musical score for 'Schema' consists of five staves. The top staff is a single melodic line in treble clef with a key signature of one flat (B-flat) and a common time signature. It features a long, sweeping line with a fermata over the final measure. The bottom four staves are accompaniment lines, each in treble clef, providing a rhythmic and harmonic foundation with eighth and sixteenth notes. The bottom-most staff ends with the text 'etc.'.